

CONF	ESP.
1	07.01
2	07.02
3	07.03
4	07.04
5	07.05
6	07.06
7	07.07
8	07.08
9	07.09
10	07.10
11	07.11
12	07.12
13	07.13
14	07.14
15	07.15
16	07.16
17	07.17
18	07.18
19	07.19
20	07.20
21	07.21
22	07.22
23	07.23
24	07.24
25	07.25
26	07.26
27	07.27
28	07.28
29	07.29
30	07.30
31	07.31
32	07.32
33	07.33
34	07.34
35	07.35
36	07.36
37	07.37
38	07.38
39	07.39
40	07.40
41	07.41
42	07.42
43	07.43
44	07.44
45	07.45
46	07.46
47	07.47
48	07.48
49	07.49
50	07.50
51	07.51
52	07.52
53	07.53
54	07.54
55	07.55
56	07.56
57	07.57
58	07.58
59	07.59
60	07.60
61	07.61
62	07.62
63	07.63
64	07.64
65	07.65
66	07.66
67	07.67
68	07.68
69	07.69
70	07.70
71	07.71
72	07.72
73	07.73
74	07.74
75	07.75
76	07.76
77	07.77
78	07.78
79	07.79
80	07.80
81	07.81
82	07.82
83	07.83
84	07.84
85	07.85
86	07.86
87	07.87
88	07.88
89	07.89
90	07.90
91	07.91
92	07.92
93	07.93
94	07.94
95	07.95
96	07.96
97	07.97
98	07.98
99	07.99
100	08.00

PAR1D=PAR6D-15x136 (2x)

ESC.: 1:50

PAR1F=PAR6F-15x136 (2x)

ESC.: 1:50

T1-108x68x8 (16x)

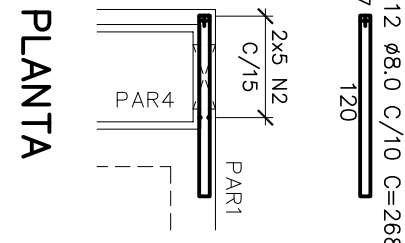
ESC.: 1:25

T2-350x250x30 (4x)

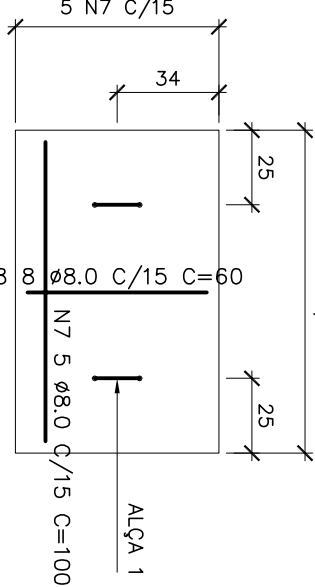
ESC.: 1:50

ALÇA 2 (24x)

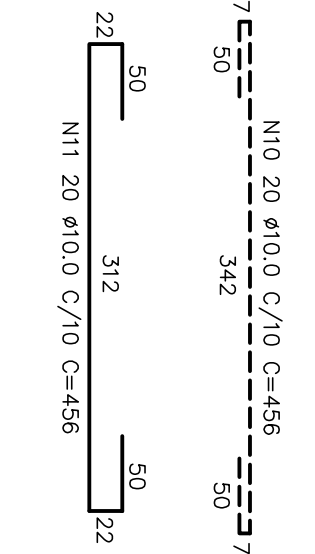
ESC.: 1:25



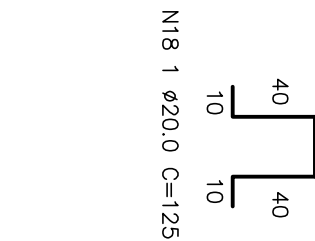
PLANTA



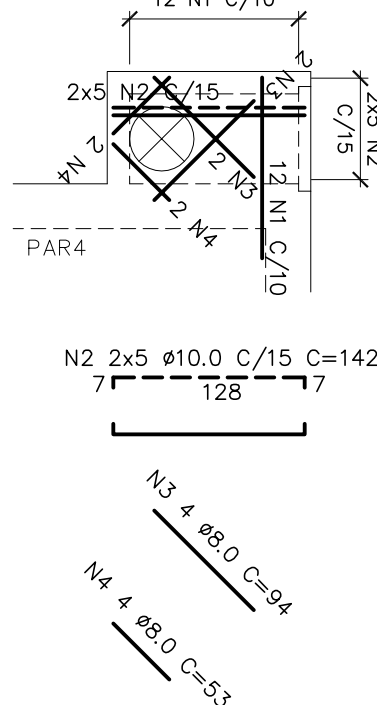
PLANTA



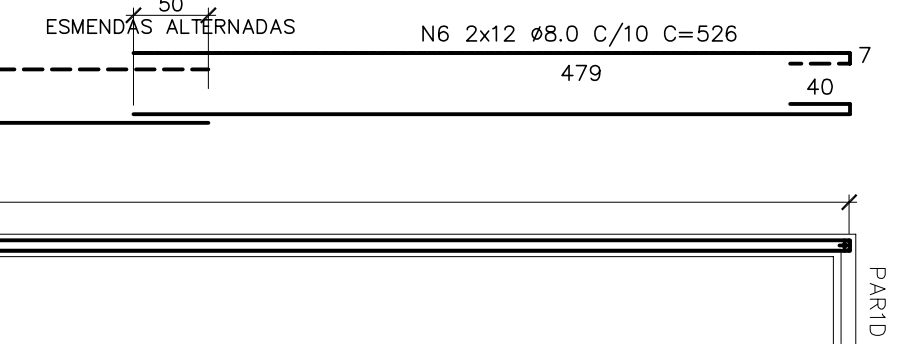
PLANTA



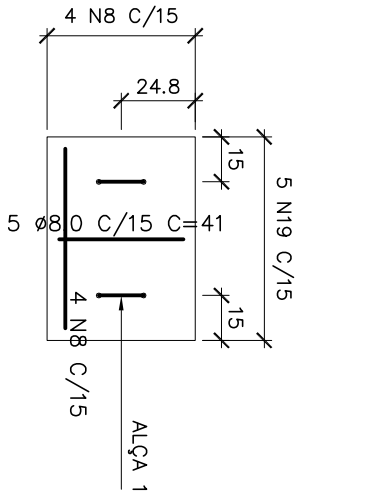
PLANTA



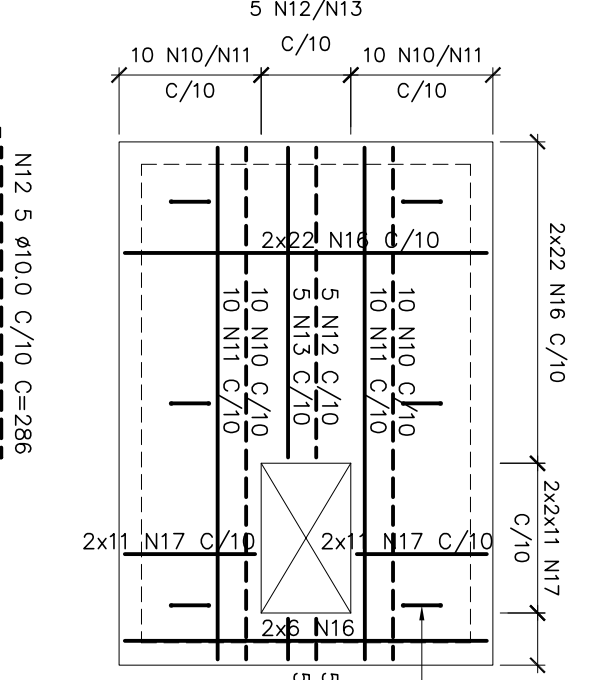
PLANTA



PLANTA



PLANTA



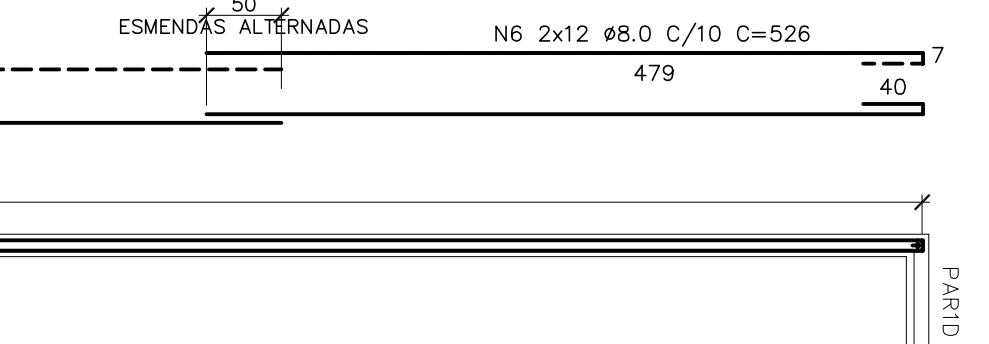
PLANTA



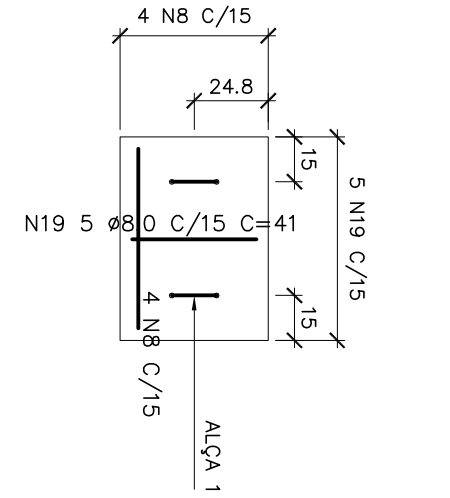
PLANTA

OBS.: AJUSTAR CONVENIENTEMENTE A FERRAGEM ONDE INTERFERIR COM ABERTURAS

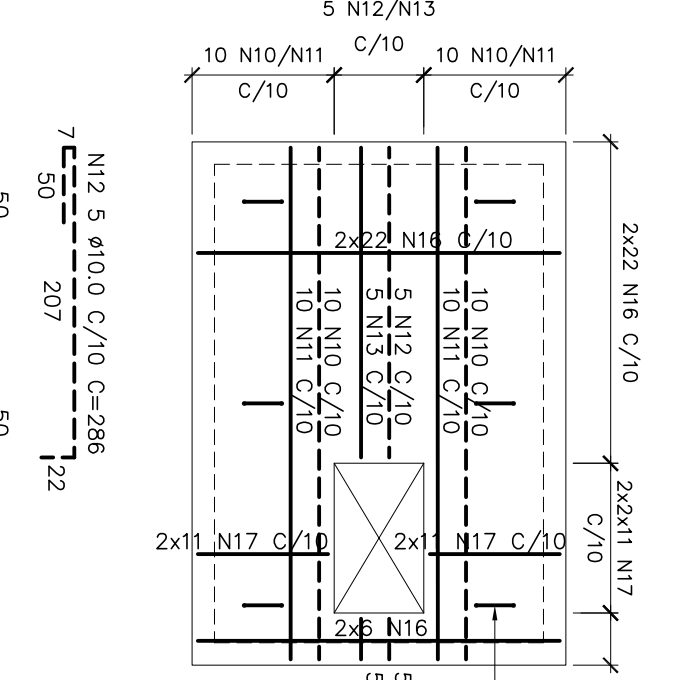
VISTA



VISTA



VISTA



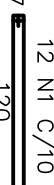
VISTA



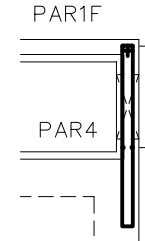
VISTA

PAR1E=PAR6E-15x136 (2x)

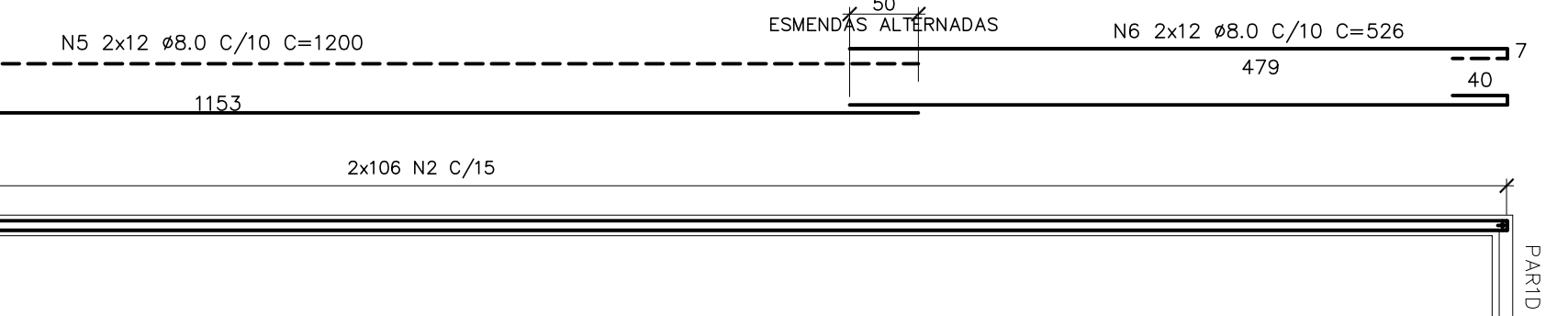
ESC.: 1:50



PLANTA



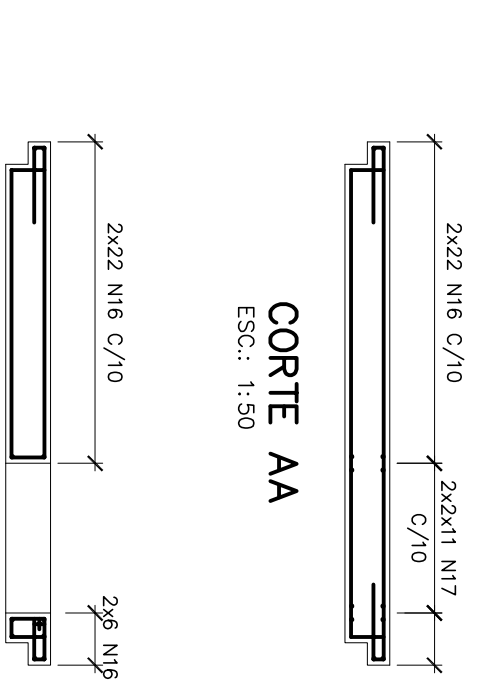
PLANTA



PLANTA



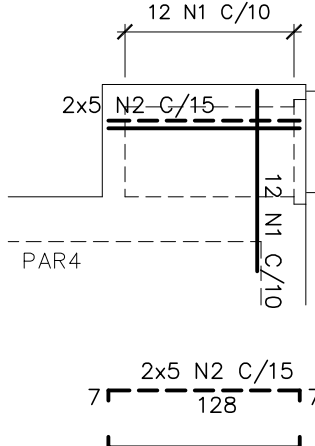
PLANTA



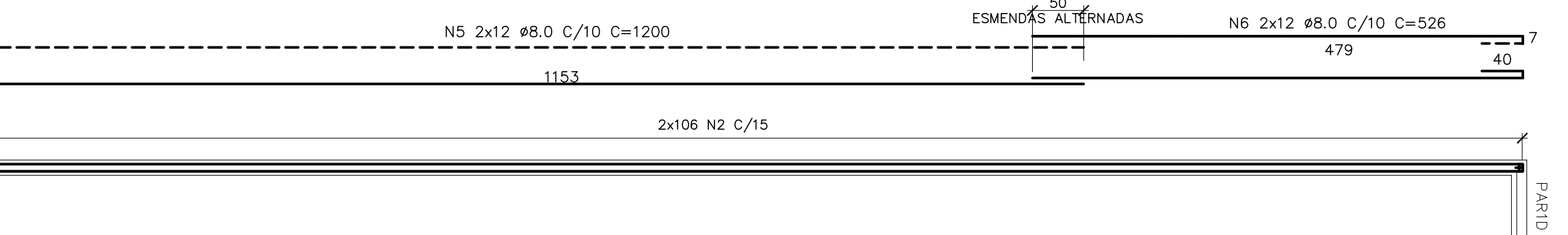
PLANTA



PLANTA



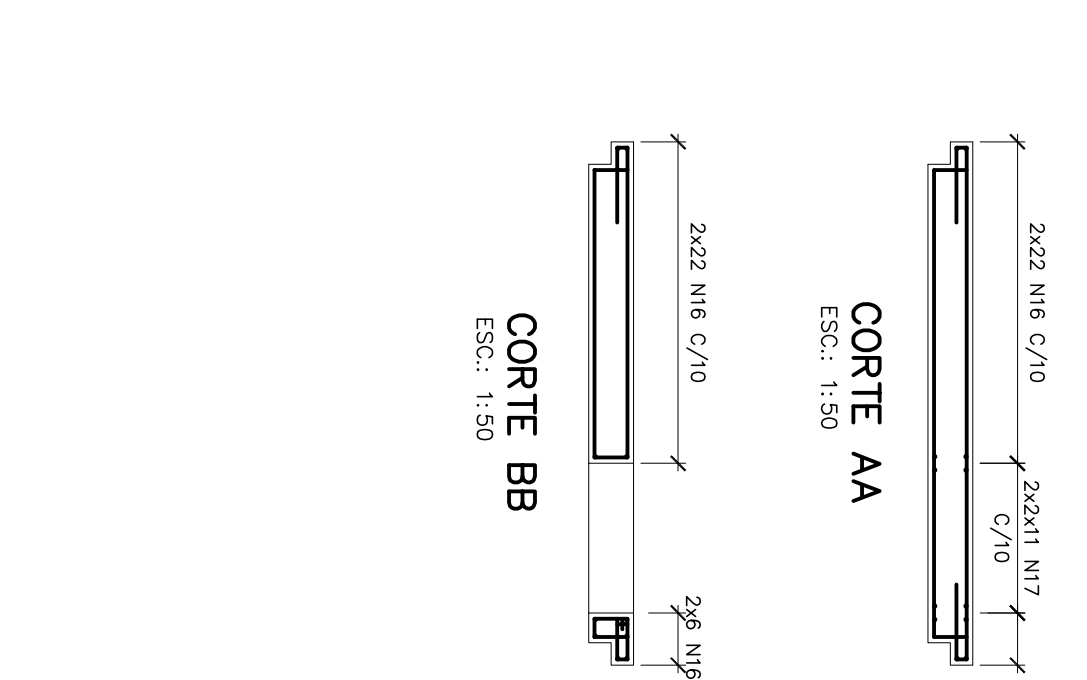
PLANTA



PLANTA



PLANTA

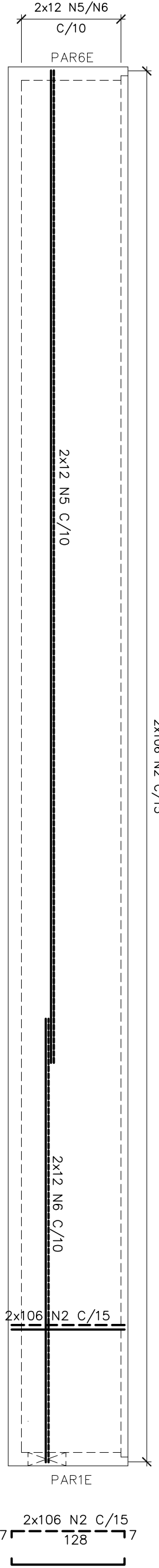


PLANTA



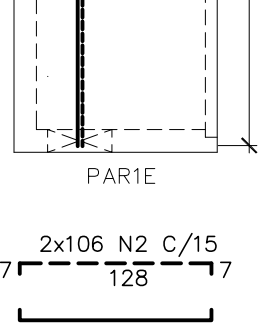
PLANTA

PLANTA



PLANTA

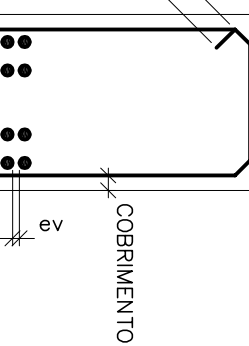
VISTA



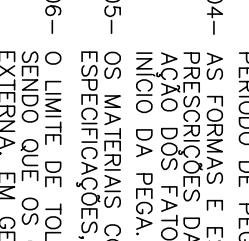
VISTA

SIMBOLOGIA:

RAIOS (r)	INTERIORS MÍNIMOS DE CURVATURA
PARA GANCHOS E ESTRIÇOS NBR-6118	
BITOLA Ø	CA-50
< 20mm	2,5 Ø
> 20mm	4,0 Ø
ESTRIBO	1,5 Ø



PLANTA



PLANTA

DETALHE "B"

SEM ESC.

DETALHE "A"

SEM ESC.

NOTAS:

- 01- COTAS E DIMENSÕES EM CENTÍMETRO E ELEVAÇÕES EM METRO, EXCETO ONDE INDICADO.
- 02- CONCRETO ESTRUTURAL fck= 30 MPa, CONCRETO MAGRO fck= 10 MPa.
- 03- PARA A CURA DO CONCRETO DEVERÁ SER UTILIZADA LAMINA D'ÁGUA OU LONA (MANTA BOM) ENCHARGADA, ADOPTAR A CURA QUÍMICA E PROTEÇÃO CONTRA O VENTO MEDIANTE APÓS O PERÍODO DE CURA.
- 04- AS FORMAS E ESCORAMENTOS DEVERÃO SER DIMENSIONADOS E EXECUTADOS DE ACORDO COM AS NORMAS NBR-7211, NBR-7212, NBR-7213, NBR-7214, NBR-7215, NBR-7216, NBR-7217, NBR-7218, NBR-7219, NBR-7220, NBR-7221, NBR-7222, NBR-7223, NBR-7224, NBR-7225, NBR-7226, NBR-7227, NBR-7228, NBR-7229, NBR-7230, NBR-7231, NBR-7232, NBR-7233, NBR-7234, NBR-7235, NBR-7236, NBR-7237, NBR-7238, NBR-7239, NBR-7240, NBR-7241, NBR-7242, NBR-7243, NBR-7244, NBR-7245, NBR-7246, NBR-7247, NBR-7248, NBR-7249, NBR-7250, NBR-7251, NBR-7252, NBR-7253, NBR-7254, NBR-7255, NBR-7256, NBR-7257, NBR-7258, NBR-7259, NBR-7260, NBR-7261, NBR-7262, NBR-7263, NBR-7264, NBR-7265, NBR-7266, NBR-7267, NBR-7268, NBR-7269, NBR-7270, NBR-7271, NBR-7272, NBR-7273, NBR-7274, NBR-7275, NBR-7276, NBR-7277, NBR-7278, NBR-7279, NBR-7280, NBR-7281, NBR-7282, NBR-7283, NBR-7284, NBR-7285, NBR-7286, NBR-7287, NBR-7288, NBR-7289, NBR-7290, NBR-7291, NBR-7292, NBR-7293, NBR-7294, NBR-7295, NBR-7296, NBR-7297, NBR-7298, NBR-7299, NBR-7300, NBR-7301, NBR-7302, NBR-7303, NBR-7304, NBR-7305, NBR-7306, NBR-7307, NBR-7308, NBR-7309, NBR-7310, NBR-7311, NBR-7312, NBR-7313, NBR-7314, NBR-7315, NBR-7316, NBR-7317, NBR-7318, NBR-7319, NBR-7320, NBR-7321, NBR-7322, NBR-7323, NBR-7324, NBR-7325, NBR-7326, NBR-7327, NBR-7328, NBR-7329, NBR-7330, NBR-7331, NBR-7332, NBR-7333, NBR-7334, NBR-7335, NBR-7336, NBR-7337, NBR-7338, NBR-7339, NBR-7340, NBR-7341, NBR-7342, NBR-7343, NBR-7344, NBR-7345, NBR-7346, NBR-7347, NBR-7348, NBR-7349, NBR-7350, NBR-7351, NBR-7352, NBR-7353, NBR-7354, NBR-7355, NBR-7356, NBR-7357, NBR-7358, NBR-7359, NBR-7360, NBR-7361, NBR-7362, NBR-7363, NBR-7364, NBR-7365, NBR-7366, NBR-7367, NBR-7368, NBR-7369, NBR-7370, NBR-7371, NBR-7372, NBR-7373, NBR-7374, NBR-7375, NBR-7376, NBR-7377, NBR-7378, NBR-7379, NBR-7380, NBR-7381, NBR-7382, NBR-7383, NBR-7384, NBR-7385, NBR-7386, NBR-7387, NBR-7388, NBR-7389, NBR-7390, NBR-7391, NBR-7392, NBR-7393, NBR-7394, NBR-7395, NBR-7396, NBR-7397, NBR-7398, NBR-7399, NBR-7400, NBR-7401, NBR-7402, NBR-7403, NBR-7404, NBR-7405, NBR-7406, NBR-7407, NBR-7408, NBR-7409, NBR-7410, NBR-7411, NBR-7412, NBR-7413, NBR-7414, NBR-7415, NBR-7416, NBR-7417, NBR-7418, NBR-7419, NBR-7420, NBR-7421, NBR-7422, NBR-7423, NBR-7424, NBR-7425, NBR-7426, NBR-7427, NBR-7428, NBR-7429, NBR-7430, NBR-7431, NBR-7432, NBR-7433, NBR-7434, NBR-7435, NBR-7436, NBR-7437, NBR-7438, NBR-7439, NBR-7440, NBR-7441, NBR-7442, NBR-7443, NBR-7444, NBR-7445, NBR-7446, NBR-7447, NBR-7448, NBR-7449, NBR-7450, NBR-7451, NBR-7452, NBR-7453, NBR-7454, NBR-7455, NBR-7456, NBR-7457, NBR-7458, NBR-7459, NBR-7460, NBR-7461, NBR-7462, NBR-7463, NBR-7464, NBR-7465, NBR-7466, NBR-7467, NBR-7468, NBR-7469, NBR-7470, NBR-7471, NBR-7472, NBR-7473, NBR-7474, NBR-7475, NBR-7476, NBR-7477, NBR-7478, NBR-7479, NBR-7480, NBR-7481, NBR-7482, NBR-7483, NBR-7484, NBR-7485, NBR-7486, NBR-7487, NBR-7488, NBR-7489, NBR-7490, NBR-7491, NBR-7492, NBR-7493, NBR-7494, NBR-7495, NBR-7496, NBR-7497, NBR-7498, NBR-7499, NBR-7500, NBR-7501, NBR-7502, NBR-7503, NBR-7504, NBR-7505, NBR-7506, NBR-7507, NBR-7508, NBR-7509, NBR-7510, NBR-7511, NBR-7512, NBR-7513, NBR-7514, NBR-7515, NBR-7516, NBR-7517, NBR-7518, NBR-7519, NBR-7520, NBR-7521, NBR-7522, NBR-7523, NBR-7524, NBR-7525, NBR-7526, NBR-7527, NBR-7528, NBR-7529, NBR-7530, NBR-7531, NBR-7532, NBR-7533, NBR-7534, NBR-7535, NBR-7536, NBR-7537, NBR-7538, NBR-7539, NBR-7540, NBR-7541, NBR-7542, NBR-7543, NBR-7544, NBR-7545, NBR-7546, NBR-7547, NBR-7548, NBR-7549, NBR-7550, NBR-7551, NBR-7552, NBR-7553, NBR-7554, NBR-7555, NBR-7556, NBR-7557, NBR-7558, NBR-7559, NBR-7560, NBR-7561, NBR-7562, NBR-7563, NBR-7564, NBR-7565, NBR-7566, NBR-7567, NBR-7568, NBR-7569, NBR-7570, NBR-7571, NBR-7572, NBR-7573, NBR-7574, NBR-7575, NBR-7576, NBR-7577, NBR-7578, NBR-7579, NBR-7580, NBR-7581, NBR-7582, NBR-7583, NBR-7584, NBR-7585, NBR-7586, NBR-7587, NBR-7588, NBR-7589, NBR-7590, NBR-7591, NBR-7592, NBR-7593, NBR-7594, NBR-7595, NBR-7596, NBR-7597, NBR-7598, NBR-7599, NBR-7600, NBR-7601, NBR-7602, NBR-7603, NBR-7604, NBR-7605, NBR-7606, NBR-7607, NBR-7608, NBR-7609, NBR-7610, NBR-7611, NBR-7612, NBR-7613, NBR-7614, NBR-7615, NBR-7616, NBR-7617, NBR-7618, NBR-7619, NBR-7620, NBR-7621, NBR-7622, NBR-7623, NBR-7624, NBR-7625, NBR-7626, NBR-7627, NBR-7628, NBR-7629, NBR-7630, NBR-7631, NBR-7632, NBR-7633, NBR-7634, NBR-7635, NBR-7636, NBR-7637, NBR-7638, NBR-7639, NBR-7640, NBR-7641, NBR-7642, NBR-7643, NBR-7644, NBR-7645, NBR-7646, NBR-7647, NBR-7648, NBR-7649, NBR-7650, NBR-7651, NBR-7652, NBR-7653, NBR-7654, NBR-7655, NBR-7656, NBR-7657, NBR-7658, NBR-7659, NBR-7660, NBR-7661, NBR-7662, NBR-7663, NBR-7664, NBR-7665, NBR-7666, NBR-7667, NBR-7668, NBR-7669, NBR-7670, NBR-7671, NBR-7672, NBR-7673, NBR-7674, NBR-7675, NBR-7676, NBR-7677, NBR-7678, NBR-7679, NBR-7680, NBR-7681, NBR-7682, NBR-7683, NBR-7684, NBR-7685, NBR-7686, NBR-7687, NBR-7688, NBR-7689, NBR-7690, NBR-7691, NBR-7692, NBR-7693, NBR-7694, NBR-7695, NBR-7696, NBR-7697, NBR-7698, NBR-7699, NBR-7700, NBR-7701, NBR-7702, NBR-7703, NBR-7704, NBR-7705, NBR-7706, NBR-7707, NBR-7708, NBR-7709, NBR-7710, NBR-7711, NBR-7712, NBR-7713, NBR-7714, NBR-7715, NBR-7716, NBR-7717, NBR-7718, NBR-7719, NBR-7720, NBR-7721, NBR-7722, NBR-7723, NBR-7724, NBR-7725, NBR-7726, NBR-7727, NBR-7728, NBR-7729, NBR-7730, NBR-7731, NBR-7732, NBR-7733, NBR-7734, NBR-7735, NBR-7736, NBR-7737, NBR-7738, NBR-7739, NBR-7740, NBR-7741, NBR-7742, NBR-7743, NBR-7744, NBR-7745, NBR-7746, NBR-7747, NBR-7748, NBR-7749, NBR-7750, NBR-7751, NBR-7752, NBR-7753, NBR-7754, NBR-7755, NBR-7756, NBR-7757, NBR-7758, NBR-7759, NBR-7760, NBR-7761, NBR-7762, NBR-7763, NBR-7764, NBR-7765, NBR-7766, NBR-7767, NBR-7768, NBR-7769, NBR-7770, NBR-7771, NBR-7772, NBR-7773, NBR-7774, NBR-7775, NBR-7776, NBR-7777, NBR-7778, NBR-7779, NBR-7780, NBR-7781, NBR-7782, NBR-7783, NBR-7784, NBR-7785, NBR-7786, NBR-7787, NBR-7788, NBR-7789, NBR-7790, NBR-7791, NBR-7792, NBR-7793, NBR-7794, NBR-7795, NBR-7796, NBR-7797, NBR-7798, NBR-7799, NBR-7800, NBR-7801, NBR-7802, NBR-7803, NBR-7804, NBR-7805, NBR-7806, NBR-7807, NBR-7808, NBR-7809, NBR-7810, NBR-7811, NBR-7812, NBR-7813, NBR-7814, NBR-7815, NBR-7816, NBR-7817, NBR-7818, NBR-7819, NBR-7820, NBR-7821, NBR-7822, NBR-7823, NBR-7824, NBR-7825, NBR-7826, NBR-7827, NBR-7828, NBR-7829, NBR-7830, NBR-7831, NBR-7832, NBR-7833, NBR-7834, NBR-7835, NBR-7836, NBR-7837, NBR-7838, NBR-7839, NBR-7840, NBR-7841, NBR-7842, NBR-7843, NBR-7844, NBR-7845, NBR-7846, NBR-7847, NBR-7848, NBR-7849, NBR-7850, NBR-7851, NBR-7852, NBR-7853, NBR-7854, NBR-7855, NBR-7856, NBR-7857, NBR-7858, NBR-7859, NBR-7860, NBR-7861, NBR-7862, NBR-7863, NBR-7864, NBR-7865, NBR-7866, NBR-7867, NBR-7868, NBR-7869, NBR-7870, NBR-7871, NBR-7872, NBR-7873, NBR-7874, NBR-7875, NBR-7876, NBR-7877, NBR-7878, NBR-7879, NBR-7880, NBR-7881, NBR-7882, NBR-7883, NBR-7884, NBR-7885, NBR-7886, NBR-7887, NBR-7888, NBR-7889, NBR-7890, NBR-7891, NBR-7892, NBR